

Via Acquanera, 29 22100 COMO
tel. 031.526.566 (r.a.) fax 031.507.984
info@calpower.it www.caltower.it

Whatever your specialization, we can measure it.



Robust, reliable, safe and
intuitive instruments for the
construction industry



Why Fluke

The company

Our instruments are in the toolboxes of professionals across the world.

The instruments are known for their ruggedness, quality, accuracy and ease of use.

Seventy years of innovation have established our reputation for high quality tools that are compliant with the most important safety regulations.



Two strong brands under one umbrella

Complementing each other in terms of product range.



Hassle-free support

- Training and education
- Repair services and service programs
- Videos and troubleshooting guides
- On- and off-line selection tools
- Warranty programs

Education and training

- Training and how-to videos
- Seminars and webinars
- Downloadable virtual demos

Laser distance meters



Product features

- Simple one-button operation to instantly measure distance between two objects
- Measures up to 50 m (165 ft) with accuracy of 2 mm (0.08 in)
- Bright laser for easy targeting even at longer distances
- Stores up to five measurement results

Application

- Calculation of surface to determine the need of paint or other raw material
- Calculate content amount e.g. wall insulation material
- Measure length of components or material (see examples)
- Find area and volume, easily add and subtract distances and calculate height
- Easily measure hard-to-access areas without climbing a ladder and without the need for a helper



414D



419D



424D

Available models

Fluke 414D Laser Distance Meter

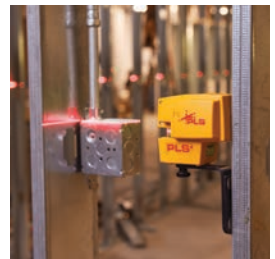
Fluke 419D Laser Distance Meter

Fluke 424D Laser Distance Meter



Pacific Laser Systems: A Fluke Company

PLS laser tools were developed to give contractors the ability to transfer critical layout reference lines and points for any job site task. All PLS laser tools are self-leveling, compact and offer durable laser alignment. Our lasers provide bright, crisp reference points and lines, for quick and accurate layout.



Lasers: PLS 180

Product features

- Fully automatic, self leveling (6 degree), two visible laser lines (plumb and level) laser tool
- Produces crisp bright lines, not dots. Pulse setting works outdoor with detector
- Green tool: address demanding interior installations at longer distances or interior projects with streaming sunlight

Applications

- Wood/steel stud framing
- Finish carpentry
- Setting and leveling foundations
- Floor and tile installation
- Acoustic ceiling installation
- Interior/Exterior Painting
- Electrical ceiling Installation/ Chase, strut conduit
- Mechanical/HVAC lay out and install
- Glazing contractor



PLS 180 Red



PLS 180 Green

Available models

- PLS 180 Red Tool
- PLS 180 Red System w/SLD
- PLS 180 Green Tool
- PLS 180 Green System w/SLD

Lasers: PLS 3/PLS 5



Product features

- PLS3 Fully automatic, self leveling (6 degree), 3 visible beams (plumb, and level) laser tool
- PLS5 Fully automatic, self leveling (6 degree), five bright pulsed co-linear beams (plumb, level and square) laser tool



PLS 5 Red

PLS 3 Red

PLS 3 Green

Available models

PLS 3 Red

PLS 3 Green

PLS 5 Red

Applications

- Wood/steel stud framing
- Floor and tile installation
- Electrical ceiling Installation/ Chase, strut conduit
- Mechanical/HVAC lay out and install
- Glazing contractor

Lasers: PLS 4



Product features

The PLS 4 red beam laser level projects points up and down over a raised cantilever with a cross line laser on the opposite end

Applications

- Wood/steel stud framing
- Finish carpentry
- Floor and tile installation
- Acoustic ceiling installation
- Electrical ceiling Installation/Chase, strut conduit
- Mechanical/HVAC lay out and install
- Glazing contractor

Available models

PLS 4 Tool



Lasers: PLS 360



Available models

PLS 360 Tool

PLS 360 System

Product features

- Fully automatic, self leveling (8 degree) level line tool
- Full circle laser line with no rotating parts
- 100 foot+ visible working range indoors, 200 foot circle
- Pulsed setting works with detector

Applications

- Wood/steel stud framing
- Finish carpentry
- Setting and leveling foundations
- Acoustic ceiling installation
- Interior and exterior painting
- Glazing contractor

Lasers: PLS HVL 100



Available models

PLS HVL100 Tool

PLS HVL100 System



Product features

Fully self leveling sets up easily and provides a 360 degree line of reference three times-horizontal and vertical with 90d degree layout

Applications

- Wood/steel stud framing
- Finish carpentry
- Setting and leveling foundations
- Floor and tile installation
- Acoustic ceiling installation
- Interior and exterior painting
- Electrical ceiling installation
- Electrical chase, strut, conduit
- Glazing contractor

Laser: PLS 480



Available models

PLS 480 Tool
PLS 480 System

Product features

Fully self leveling square, level and plumb reference designed for concrete, foundations, walls, square on slope and horizontal level benchmarks

Applications

- Wood/steel stud framing
- Finish carpentry
- Setting and leveling foundations
- Acoustic ceiling installation
- Mechanical/HVAC layout and install
- Glazing contractor

Lasers: PLS FT90



Product features

- Fast square lay out
- Superior accuracy and clarity

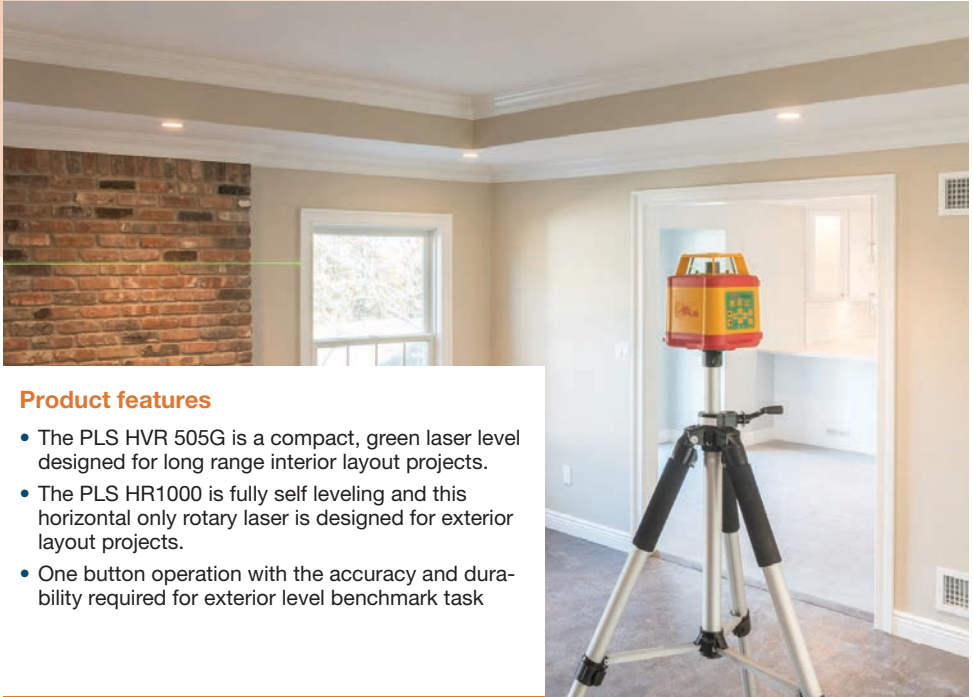
Applications

Floor and tile installation

Available models

PLS FT90
PLS FT90 and PLS 180 combo pack

Rotary lasers: PLS HVR 505 + HR 1000



Product features

- The PLS HVR 505G is a compact, green laser level designed for long range interior layout projects.
- The PLS HR1000 is fully self leveling and this horizontal only rotary laser is designed for exterior layout projects.
- One button operation with the accuracy and durability required for exterior level benchmark task

Applications

- Wood/steel stud framing
- Setting and leveling foundations
- Acoustic ceiling installation
- Mechanical/HVAC layout and install
- External Excavation

Available models

PLS HVR 505 in RED and GREEN

PLS HR 1000 RED

PLS HDR 1000 RED



PLS HVR 505 Red



PLS HVR 505 Green



PLS HR 1000 Red



PLS HDR 1000 Red

Tripods



20512



20513



21502

Available models

PLS-TPOD410, Compact Laser Folding Tripod with 5/8 X 11 TO 1/4 X 20 Adapter

PLS-20309 1/4-20 Tripod

PLS-20512 5/8-11 Tripod

PLS-20513 5/8-11 Elevator Tripod

PLS-20351 Tripod Adaptor

PLS-21114 Universal Adapter for PLS 480

PLS-21502 Tripod Extender

Thermal imaging cameras



Product features (TiS20)

- Quality images—120x90 resolution (10,800 pixels)
- D:S of 193:1
- Find problems fast with the exclusive IR-Fusion® Blending mode—blending reveals key details to help you find potential issues
- 3.5 inch, 320x240 LCD
- 5 megapixel digital camera
- Smart battery system—lithium ion smart battery with five-segment LED charge level display
- Email and share images in real time with Fluke Connect®
- Stores thousands of images—4 GB internal memory and optional 4 GB micro SD card



TiS20



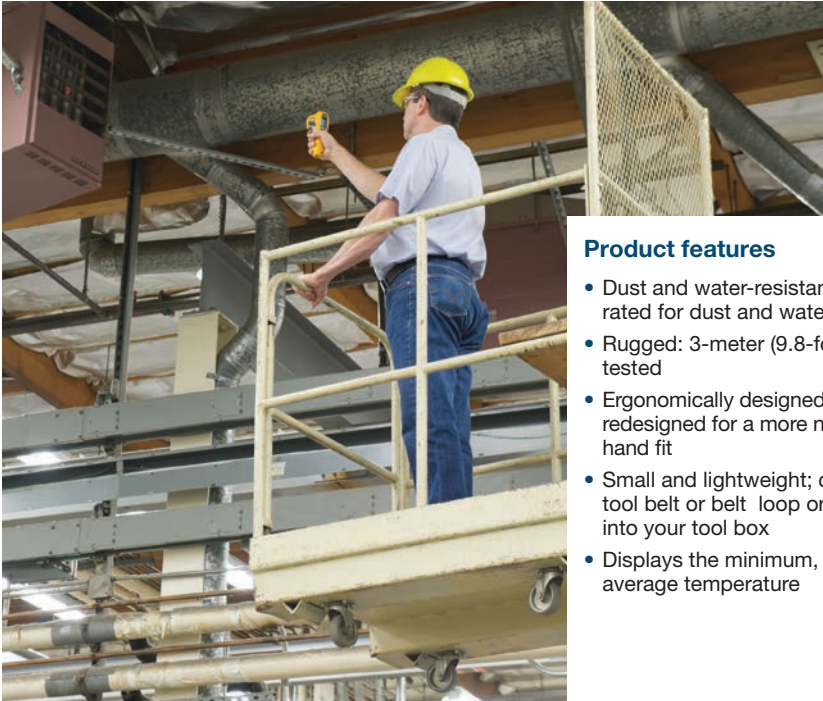
Applications

- Inspect isolation in walls
- Check heat losses in HVAC installations
- Inspect pipes and ventilation systems (HVAC)
- Find humidity spots in walls and window frames

Available models

TiS75/TiS65/TiS60/TiS55/TiS50/TiS45/TiS40/TiS20/TiS10

Infrared thermometers



Product features

- Dust and water-resistant: IP54 rated for dust and water resistance
- Rugged: 3-meter (9.8-foot) drop tested
- Ergonomically designed: completely redesigned for a more natural hand fit
- Small and lightweight; clips to your tool belt or belt loop or easily fits into your tool box
- Displays the minimum, maximum or average temperature

Application

Measure temperatures in hard-to-reach or hazardous areas



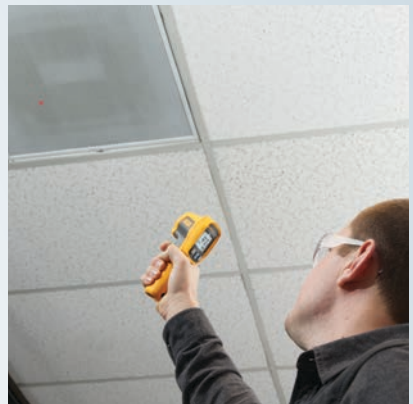
62



64

Available models

- Fluke 62 Max Infrared Thermometer
- Fluke 62 Max+ Infrared Thermometer
- Fluke 64 Max Infrared Thermometer



Digital multimeters



Product features

- VoltAlert™ (117)
- AutoVolt (117, 116, 114)
- Thermometer for HVAC (116)
- Test flame sensors (116)
- Low impedance mode (113)
- LoZ: “ghost voltage protect”
- Min/Max/Avg record signal fluctuations
- VChk™ (113)



Applications

- Checking if voltage is applied to the socket
- Non Contact Voltage detecting if circuits are live (VoltAlert™)
- Temperature measurement of rooms or HVAC applications
- Test flame sensors in HVAC applications
- Monitor signal fluctuations

Available models

- Fluke 113 Utility Multimeter
- Fluke 114 Electrical Multimeter
- Fluke 115 Field Service Testing Multimeter
- Fluke 116 HVAC Multimeter with Temperature and Microamps
- Fluke 117 Electrician's Multimeter with Non-Contact Voltage



Electrical testers: Voltage and continuity testers



Product features

- Measuring ac/dc voltage
- Easy to use (even with gloves on)
- Large buttons and bright backlights
- Clear audible and physical indicators
- Heavy duty molded case, a thicker cord with wear indicator
- Sturdy battery case and durable probe protector
- Detect voltage even with discharged batteries
- Audio on/off for testing in quiet areas
- Resistance testing
- Comply with regulations

Applications

- Checking if voltage is applied to the socket
- Check cables on continuity
- Check Residual-Current Devices (RCDs)
- Identification of live conductors



Available models

Fluke T90 Voltage/Continuity Tester

Fluke T110 Voltage/Continuity Tester with Switchable Load

Fluke T130 Voltage/Continuity Tester with LCD, Switchable Load

Fluke T150 Voltage/Continuity Tester with LCD, Ohms, Switchable Load

Electrical testers: T5 and T6



Product features

- Measure voltage and current without test leads
- Measure voltage and current at the same time without disconnecting the circuit
- Measure Resistance 1 Ω to 100 k Ω
- Frequency measurement 45 Hz to 66 Hz

Available models

- T6-600 Electrical Tester
- T6-1000 Electrical Tester
- T5 -600 Electrical Tester
- T5-1000 Electrical Tester

Applications

- Quickly check if a circuit is live before starting work
- Measure voltages
- Measure loads on a branch circuit at a service panel
- Check circuit continuity



T6-600



T6-1000



T5-600



T5-1000



Electrical testers: VoltAlert™ and light



Product features

- Upon detection, tip glows and beeper sounds indicates the presence of voltage
- Measurement range: 90 V to 1000 V ac or 200 V to 1000 V ac depending on model
- Non-contact ac voltage detector and LED flashlight combined in one convenient, compact design (LVD)

Application

Quickly test for energized circuits cables in construction environments



2AC

1AC

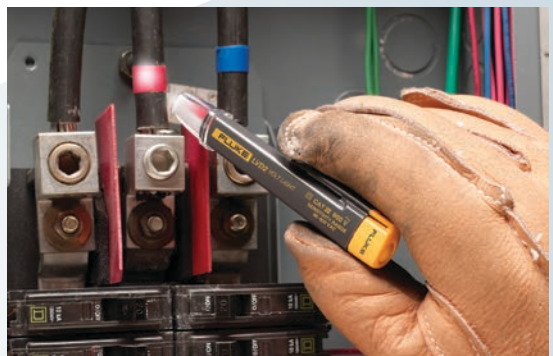
LVD2



LVD1

Available models

- 2AC VoltAlert™ Voltage Detector
- 1AC-II VoltAlert™ Voltage Detector
- LVD2 Volt Light
- LVD1 Volt Light

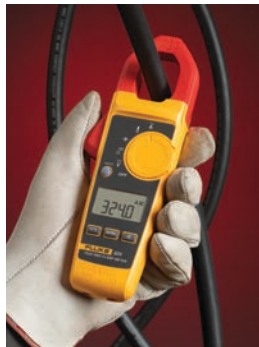


Clamp Meters: 320 Series True-rms



Product features

- 400 A ac current measurement (ac and dc current; 325 only) and 600 V ac and dc voltage measurement
- Resistance measurement up to 40 k Ω (325) and 4 k Ω (323 and 324) with continuity
- CAT IV 300 V/CAT III 600 V safety rating



Applications

- General troubleshooting tools for commercial and residential electricians
- Verify the presence of load current, ac voltage and continuity of circuits, switches, fuses and contacts

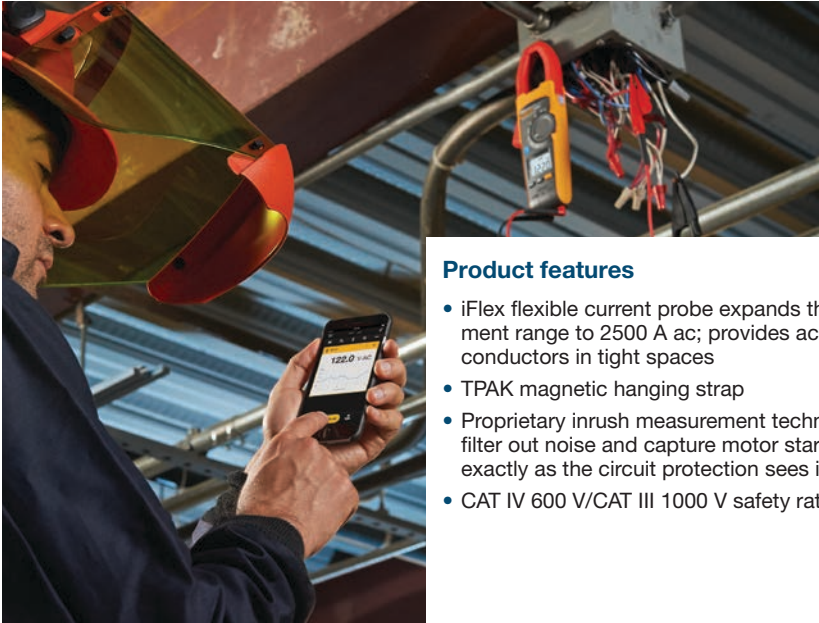
Available models

Fluke 323 True-rms Clamp Meter

Fluke 324 True-rms Clamp Meter

Fluke 325 True-rms Clamp Meter

Clamp Meters: 376 FC True-rms ac/dc with iFlex



Product features

- iFlex flexible current probe expands the measurement range to 2500 A ac; provides access to large conductors in tight spaces
- TPAK magnetic hanging strap
- Proprietary inrush measurement technology to filter out noise and capture motor starting current exactly as the circuit protection sees it
- CAT IV 600 V/CAT III 1000 V safety rating

Available models

Fluke 376 FC True-rms ac/dc Clamp meter with iFlex



Applications

- Advanced troubleshooting
- Log and trend measurements to pinpoint intermittent faults
- Create and send reports right from the field
- Stay safely away from the arc flash zone through Bluetooth connectivity to Apple and Android devices



Clamp Meters: 902 FC True-rms HVAC



Product features

- 600 A ac current measurement
- 600 V ac and dc voltage measurement
- Temperature measurement from -10 °C to 400 °C
- 1000 µF capacitance measurement

Applications

Performs the essential measurements of HVAC systems—micro-amps for testing pilot light sensors, resistance, ac current, ac/dc voltage, capacitance and contact temperature



Available models

Fluke 902 FC True-rms HVAC Clamp Meter

Indoor air quality tools: temperature humidity meter



Product features

Take accurate humidity and temperature readings for assessing air quality

Applications

- Backlit dual display
- Digital sensor
- Dew point and wet bulb
- 99 record storage capacity
- Compact and lightweight
- Min/Max/Avg/Hold functions

Available models

Fluke 971 Temperature Humidity Meter

Indoor air quality tools: AirMeter



Product features

Measures: temperature, velocity, humidity, CO₂ and CO

Applications

- Respond to comfort-related calls from occupants
- Verify the operation of building HVAC control systems
- Determine whether adequate ventilation exists
- Monitor air flow and velocity
- Test for dangerous carbon monoxide leaks
- Perform duct traversals
- Optimize HVAC systems to manage energy costs

Available models

Fluke 975V AirMeter™ with Velocity

Fluke 975 AirMeter™



Indoor air quality tools: Airflow meter



Product features

- Powerful meter provides differential and static pressure, air velocity and flow readings
- Convenient colored hoses help proper interpretation of pressure readings
- User-defined duct shape and size for maximum airflow accuracy
- Resolution down to 0.001 in H₂O
- 99 point data storage capacity
- Min/Max/Average/Hold functions for easy data analysis



Available models

- Fluke 922 Airflow Meter
- Fluke 922 Airflow Meter Kit

Applications

- Measure pressure drops across key HVAC equipment to drive peak performance and extend equipment life
- Match ventilation to occupant loads
- Monitor indoor vs. outdoor pressure relationships and manage the building envelope
- Promote indoor comfort and quality
- Perform duct traversals for accurate airflow readings

Fluke 279 FC True-rms Thermal Multimeter



Product features

- Full-featured multimeter with built-in thermal imager
- Thermal imaging reveals many electrical issues quickly and safely, eliminating the need for time-consuming testing and validation
- Two-in-one tool is designed to increase productivity—no need to go back to the truck or office to retrieve a shared camera or wait for the thermographer—do more in less time!
- iFlex expands your measurement capabilities—get into tight, hard to reach spaces for current measurement (up to 2500 A ac)
- Save measurements and images while communicating wirelessly with a smart phone up to 6.1 m (20 ft) away (no obstructions)



Applications

- First-line troubleshooting tool for electrical and HVAC equipment that can check hot spots on high-voltage equipment and transformers, and detect heating of fuses, wires, insulators, connectors, splices and switches.
- Check status of motors in HVAC installations

Available models

- 279 FC TRMS
- 279 FC/iFlex TRMS



Whatever your specialization, we can measure it.

For more information go to
www.fluke.co.uk/construction

Find us on YouTube and Facebook
for helpful videos and information.

Fluke. *Keeping your world
up and running.®*

Fluke Corporation

PO Box 9090, Everett, WA 98206 U.S.A.

Fluke Europe B.V.

PO Box 1186, 5602 BD
Eindhoven, The Netherlands

For more information call:

In the U.S.A. (800) 443-5853 or
Fax (425) 446-5116

In Europe/M-East/Africa +31 (0) 40 2675 200 or
Fax +31 (0) 40 2675 222

In Canada (800)-36-FLUKE or
Fax (905) 890-6866

From other countries +1 (425) 446-5500 or
Fax +1 (425) 446-5116

Web access: <http://www.fluke.com>

©2018 Fluke Corporation.

Specifications subject to change without notice.
3/2018 6010343a-en

**Modification of this document is not permitted
without written permission from Fluke Corporation.**

Cal Power

Via Acquanera, 29 22100 COMO
tel. 031.526.566 (r.a.) fax 031.507.984
info@calpower.it www.calpower.it