

Recommended power generation solutions

Multifunction Calibrators

Best suited for:

- Troubleshooting and calibrating 4-20 mA loops, temperature, pressure and frequency input instruments in one tool
- Document the performance of temperature and calibrate pressure switches and transmitters

Power generation applications:

Measure, source, and simulate dc loop current pressures and temperatures to assist in meeting quality or minimizing measurement errors in custody transfer.

Pressure and temperature transmitter calibration; calibration and configuration of HART devices; documenting field calibrations for recall and upload. Assist in documenting the performance of EPA or NRC regulated devices.

Temperature calibrators

Best suited for:

- Troubleshooting and calibrating temperature instrumentation
- Testing temperature sensors
- Measuring and sourcing thermocouples and RTD's, plus volts and ohms into control system I/O

Power generation applications:

Measure thermocouples, ohms, and volts to test sensors and transmitters by sourcing/simulating thermocouples, RTD's, volts and ohms; executing remote tests with auto step and auto ramp; powering transmitters during test using loop power supply with simultaneous mA measurement; calibrating linear TC transmitter; calibrating thermal imagers and infrared thermometers.

Pressure calibrators

Best suited for:

- Calibration of pressure transmitters, gauges and switches
- Maintenance of almost any pressure device using pressure sourcing and milliamp measurements
- Calibrating pressure and I/P instruments with simultaneous pressure and current measurement

Power generation applications:

Pressure measurements using internal sensor; measure mA while sourcing. Precise manual or automatic pressure control. Ensuring safety of pressure containment vessels.

Flow calibrators

Best suited for:

- Calibration of leak rate monitors/testers

Power generation applications:

Ensuring leak integrity of containment nuclear containment area.

Pressure gauges and comparison test pumps

Best suited for:

- Calibrating pressure gauges

Power generation applications:

Provides a known stable reference pressure of higher accuracy for detecting and correcting errors in the pressure measuring device being tested.



More recommended power generation solutions

Baths and dry-wells

Best suited for:

- Calibration of dial thermometers
- Calibration of RTDs and thermocouples
- RTD and thermocouple calibration check
- Temperature controller loop calibration
- Temperature transmitter and sensor combined calibration
- Temperature switch test

Power generation applications:

Provides a stable reference temperature for comparing temperature measuring equipment against a standard of higher accuracy to detect and correct errors in the device being tested. Used for testing components of control and monitoring systems.

Precision thermometers and probes

Best suited for:

- Contact temperature measurement in fluids
- Contact temperature measurement in thermowells and test wells for in situ comparisons with controllers, displays, and gauges.
- Use as an external reference thermometer to improve calibration accuracy
- Logging temperatures

Power generation applications:

Provides a more accurate reference temperature for checking and calibrating temperature measurement equipment. Use to detect errors in other instruments to simply to determine temperature precisely. Intrinsically safe models such as the 1551 Ex may be used in potentially explosive atmospheres.



Via Acquanera, 29 22100 COMO
tel. 031.526.566 (r.a.) fax 031.507.984
info@calpower.it www.calspower.it

Fluke. The Most Trusted Tools in the World.

Fluke Corporation
PO Box 9090, Everett, WA 98206 U.S.A.

Fluke Europe B.V.
PO Box 1186, 5602 BD Eindhoven, The Netherlands

For more information call:
In the U.S.A. (800) 443-5853 or Fax (425) 446-5116
In Europe/M-East/Africa +31 (0) 40 2675 200 or Fax +31 (0) 40 2675 222
In Canada (800)-36-FLUKE or Fax (905) 890-6866
From other countries +1 (425) 446-5500 or Fax +1 (425) 446-5116
Web access: <http://www.fluke.com>

©2013 Fluke Corporation.
Specifications subject to change without notice.
Printed in U.S.A. 6/2013 4264865A_EN
Pub-ID 1202-eng

Modification of this document is not permitted without written permission from Fluke Corporation.



Power and utilities industry calibration solutions

The power and utilities industry is a demanding and diverse environment that requires reliable instruments that are both accurate and rugged. Whether you're working in power generation, transmission, distribution, or installation, you need accurate tools that you can count on for the bench and the field.

With Process Calibration solutions from Fluke and Fluke Calibration for electrical, multifunction, mA loop, temperature, pressure and flow applications, you can find the right tools for the challenges you face every day.

Facility Maintenance/ Process Technician

Focus: power generation

What issues do you face?

- Ensuring continuous and predictable uptime and downtime
- Safety of personnel and the utility environment
- Budget restrictions
- Troubleshooting process interruption with immediate response and repair

Fluke solutions:

- Multi-function and loop tools
- Temperature calibration tools
- ⬆ Pressure calibration tools
- ⇄ Flow calibration tools

Engineer

Focus: process design and improvement

What issues do you face?

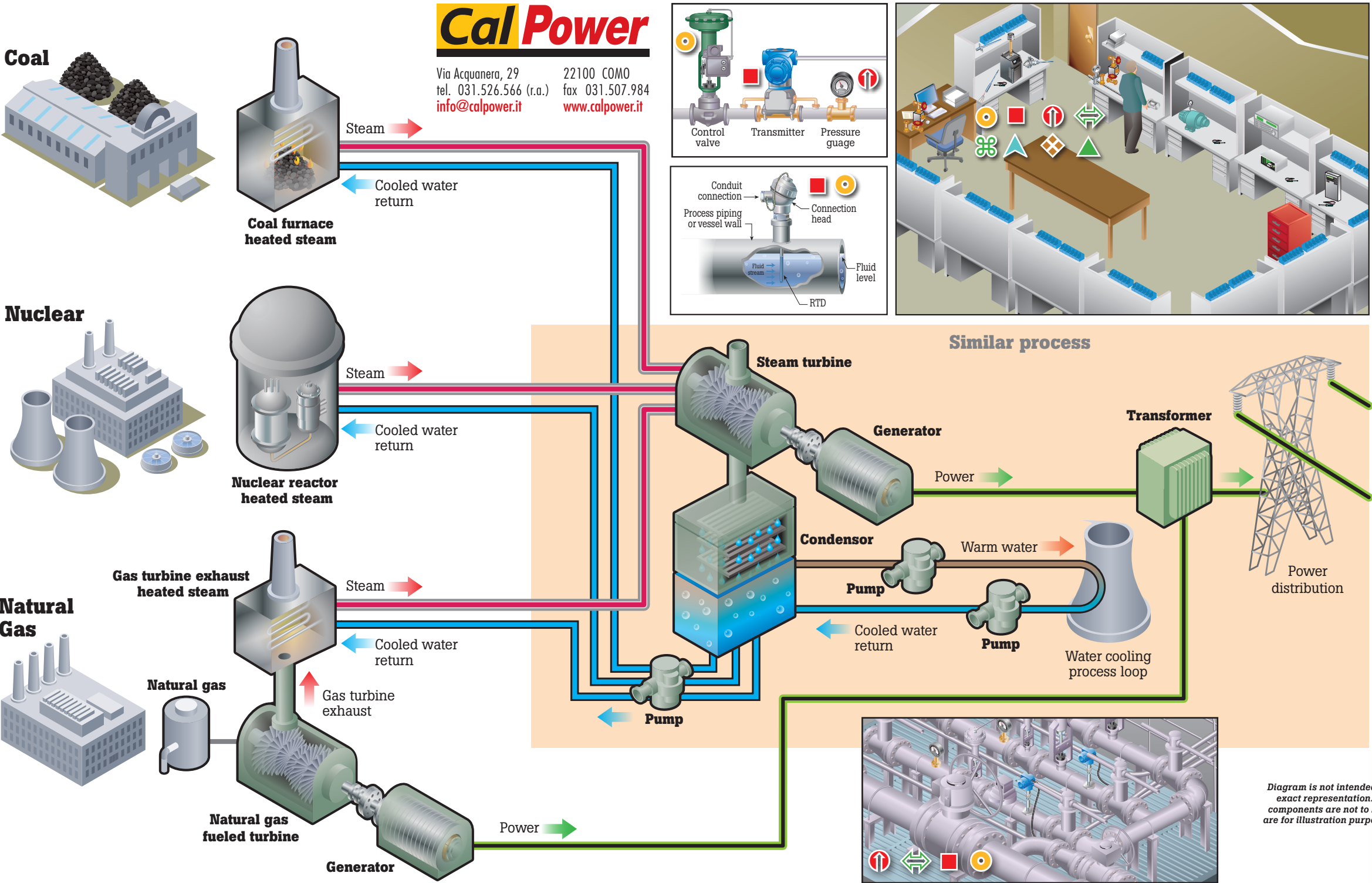
- Specifying equipment to meet regulations and requirements
- Preventing downtime

Fluke solutions:

- Temperature calibration tools
- ⬆ Pressure calibration tools
- ⇄ Flow calibration tools
- Multi-function and loop tools
- ▲ Electrical calibration tools

Fluke power generation solutions

Learn how Fluke solutions can save you time and money while increasing your productivity at www.fluke.com/petrochem. Based on you. Built by Fluke.



FLUKE®

Instrument Technician

Focus: testing, maintenance and repair of equipment, instruments and systems

What issues do you face?

- Downtime prevention
- Safety systems testing
- Troubleshooting process interruption with immediate response and repair
- Leak rate testing

Fluke solutions:

- Temperature calibration tools
- ⌘ Multi-function and loop tools
- ⬆ Pressure calibration tools
- ⇄ Flow calibration tools

Industrial calibration technician

Focus: calibrating measurement devices

What issues do you face?

- Making accurate measurements
- Documenting procedures
- Increasing throughput

Fluke solutions:

- Temperature calibration tools
- ⬆ Pressure calibration tools
- ⇄ Flow calibration tools
- ◆ Standards
- ▲ Electrical Calibration



Control room



Quality/compliance/regulatory



Field locations



Cal lab/instrument shop