

FLUKE®

1623-2 Earth/Ground Tester

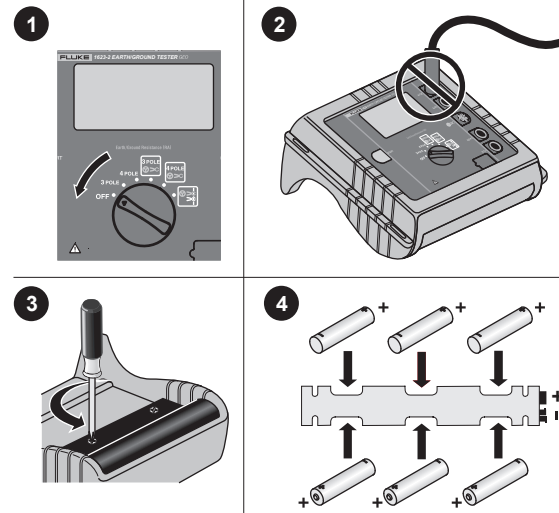
Quick Reference Guide

⚠⚠ Warning

To prevent possible electrical shock, fire, or personal injury, read the "1623-2/1625-2 Safety Information" before you use this Product.

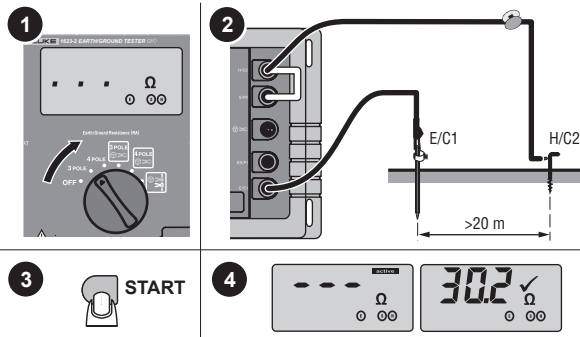
Go to www.fluke.com to register your product, download manuals, and find more information.

Batteries

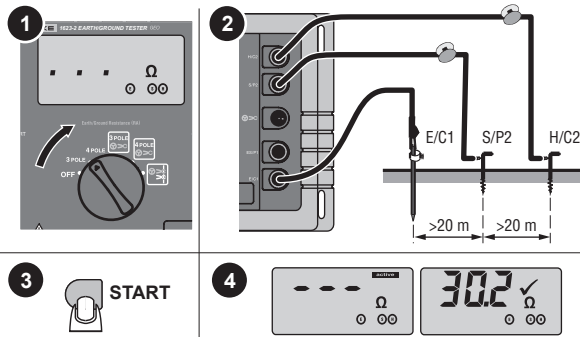


Measurement

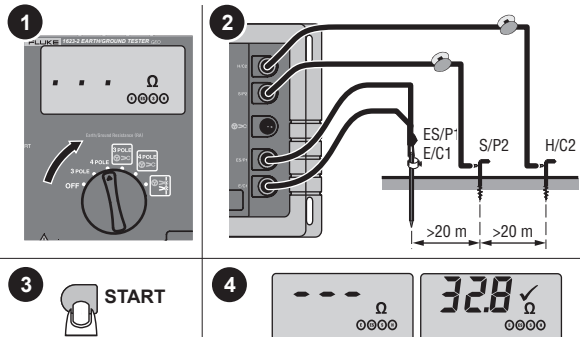
RA 2-Pole Measurement



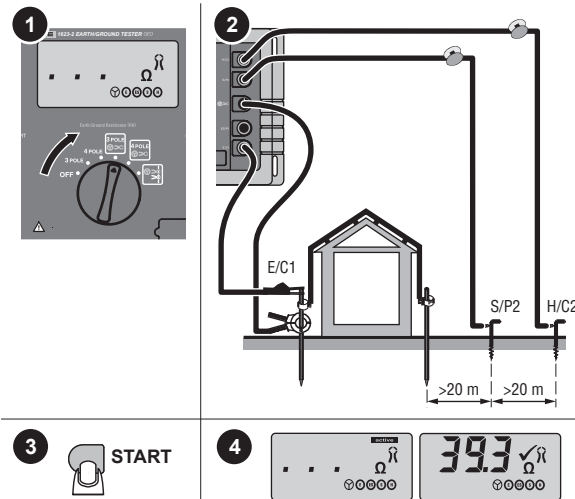
RA 3-Pole Measurement



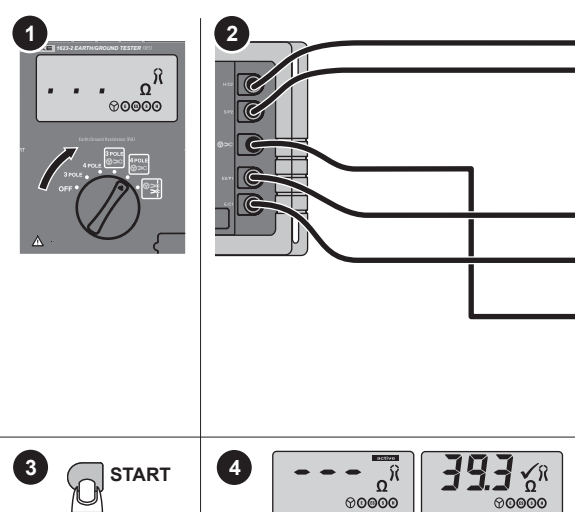
RA 4-Pole Measurement



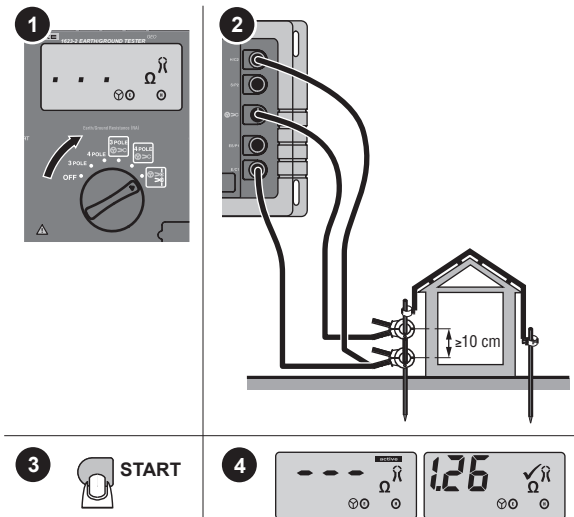
RA 3-Pole Selective Earth Resistance with Current Clamp



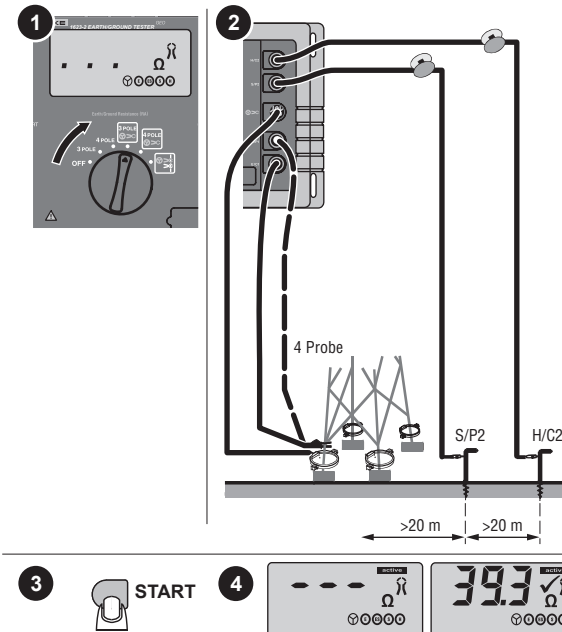
RA 4-Pole Selective Earth Resistance with Current Clamp



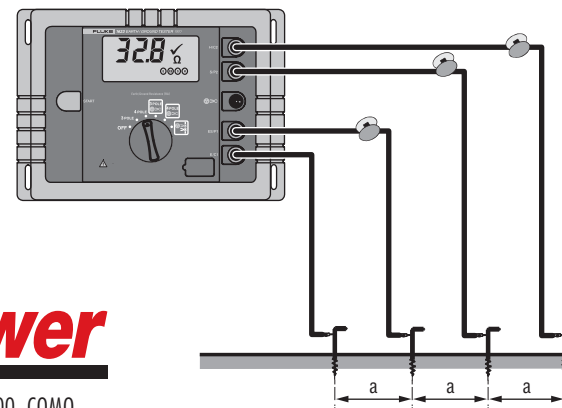
Stakeless Ground Loop Measurement



3-Pole/4-Pole Earthing Resistance without Disengaging the Overhead Earth Wire



Soil Resistivity



Cal Power

Via Acquanera, 29
tel. 031.526.566 (r.a.)
info@calpower.it

22100 COMO
fax 031.507.984
www.calspower.it

FLUKE®

1625-2 Earth/Ground Tester

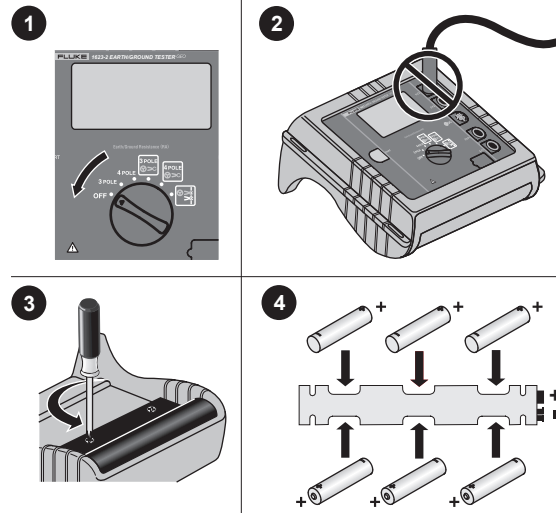
Quick Reference Guide

⚠⚠Warning

To prevent possible electrical shock, fire, or personal injury, read the "1623-2/1625-2 Safety Information" before you use this Product.

Go to www.fluke.com to register your product, download manuals, and find more information.

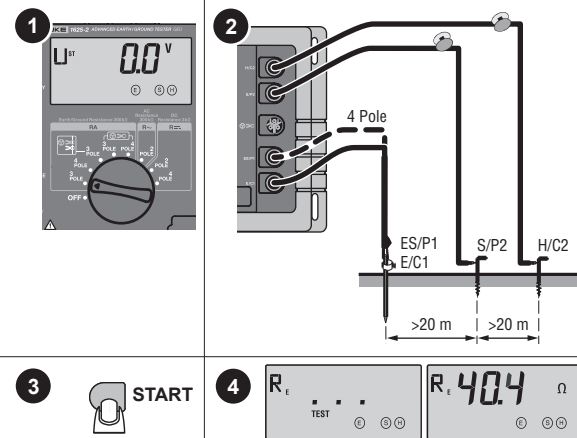
Batteries



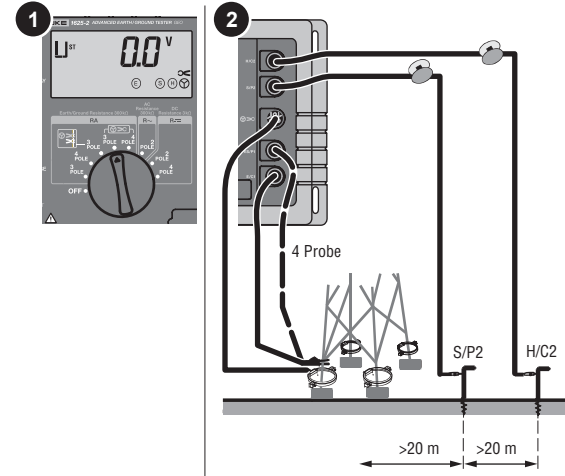
PN 4325438 January 2014
© 2014 Fluke Corporation. All rights reserved. All product names are trademarks of their respective companies.

Measurement

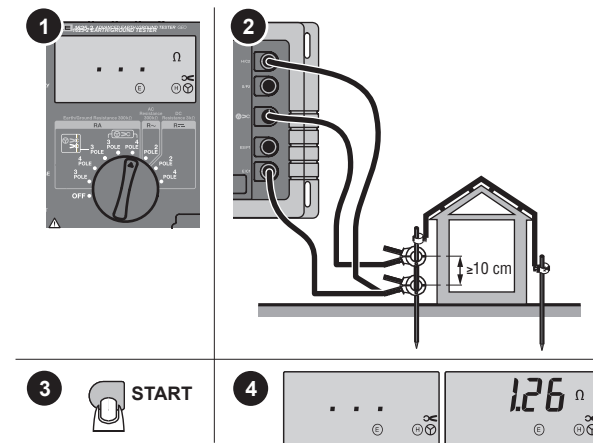
3-Pole/4-Pole Measurement of Earthing Resistance



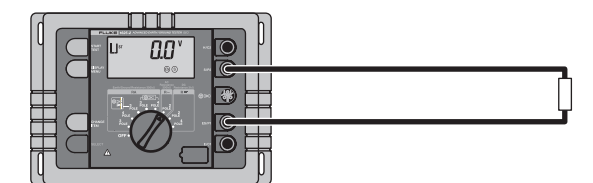
3-Pole/4-Pole Earthing Resistance without Disengaging the Overhead Earth Wire



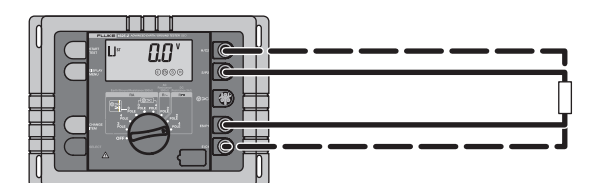
Stakeless Ground Loop Measurement



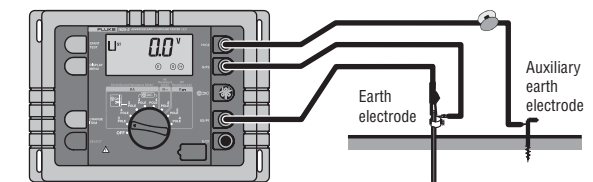
2-Pole/4-Pole Resistance (R~)



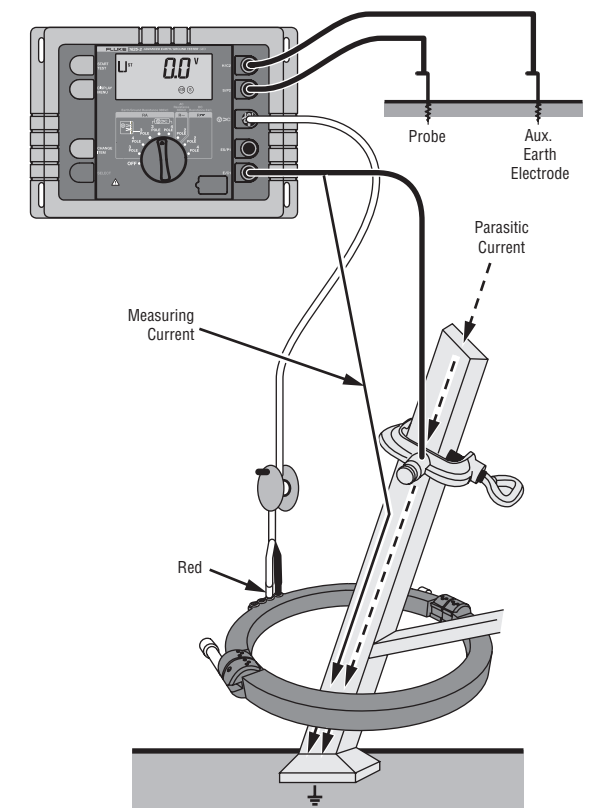
2-Pole Resistance (R---)



Compensation of Earth Electrode Connecting Lead



External Current Transformer



Zero Test Leads (All 2-Pole/3-Pole Types)

